



ALDECO

Presents 2021 collection



ALDECO

Future Healing

2021 Collection

Future Healing

The World has come to a turning point in the longing for hope and positivity, searching for new ways to overcome and reinvent itself. Future Healing is a collection driven by that DREAM for a better planet.

Taking the latest events as a fuel for endless creativity and innovation, today's choices and actions are the engine for planning a more sustainable and caring future.

In this collection we present even more natural fabrics, also some recycled options, very resistant textures and cleanable with OEKO-TEX certification.

OEKO-TEX certificates that fabrics are not aggressive for the environment and the skin.

We present fabrics that aren't just beautiful and with amazingly soft touch, but also with an inherent social and global responsibility. Fabrics made of recycled plastic bottles rescued from our oceans, from fabric production wastage, new techniques that reduces water consumption and energy, that are brought to life in the shape of beautiful, soft, resistant and sustainable fabrics.

Cutting-edge technologies are making it possible for us to provide eco-friendly and more technical fabrics in this collection – not only for its recycled composition, but also for its longevity and maintenance simplicity that prevents the need of constant washing with aggressive chemicals and water waste.

Simple actions such as the adaptation of manufacturing productions that saves up to 250 litres of water per sofa average meterage...

Embrace this journey for a Future Healing.



DAYDREAMING WLB



DAYDREAMING WLB



Composition: 60%PL + 40% LI

Width: 320 cm

Weight: 435 gr/lm

Lightfastness: 5

This curtain fabric has a textured transparency with natural look that resembles a very light and soft linen. An elegant sheer with 320 cm width that has a raw beauty inherent to linen, with a cloudy soft touch. The way it falls is especially tempting.

The greatness of this fabric is that it looks very natural, even though it is a polyester and linen blend, which makes it more resistant to washing and more straight when washed and ironed. We opted for these 2 bright colors to represent the natural shades of linen.

This lovely fabric comes with Eco Lead Band.



01 Pure White



02 Natural White

TATAMI WLB



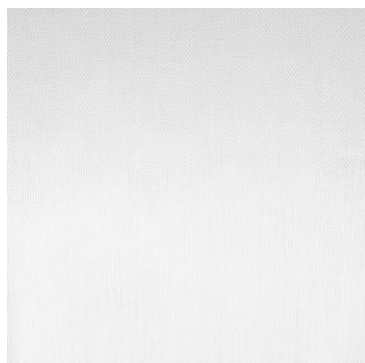
TATAMI WLB



Composition: 100%PL
Width: 320 cm
Weight: 442 g/lm
Lightfastness: 5

Tatami is a very special transparency curtain fabric with a with blended effect that resembles the Japanese tatami, with a raw and natural look. This is also a very lightweight curtain and it's presented in 4 special colours easy to complement with all sorts of decoration. This fabric is available with Eco Lead Band included for more versatility.

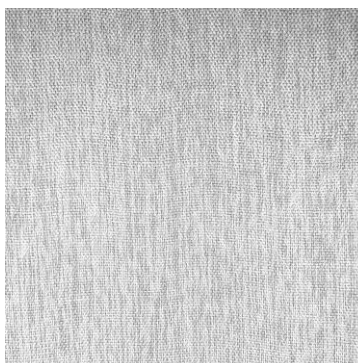
A tatami is a type of mat used as a flooring material in traditional Japanese-style rooms. They are usually covered with woven soft rush (igusa) straw. The core is traditionally made from rice straw.



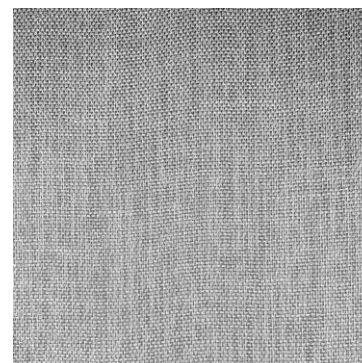
01 Natural White



02 White Cream



03 Light Dove



04 Light Stone

DREAMSTIME WLB



본 작품은 2019년 한국문화재단 주최한 '2019년 한국문화재단 공모전'에서 수상한 작품입니다.

DREAMSTIME WLB



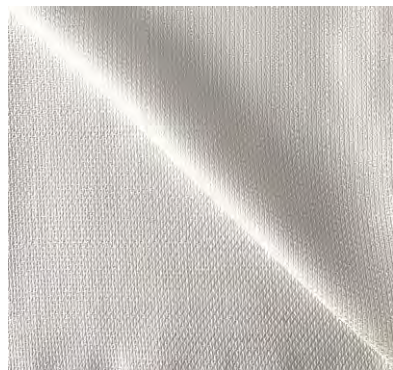
Dreamtime is a 320 cm wide sheer, perfect for a richer textured response for every project. It is considered a heavier response for a sheer curtain, considering it is almost 700g/lm and it gives a magnificent and heavy fall. It is already available with Eco Lead Band for extra heaviness.

Composition: 100%PL

Width: 320 cm

Weight: 696 g/lm

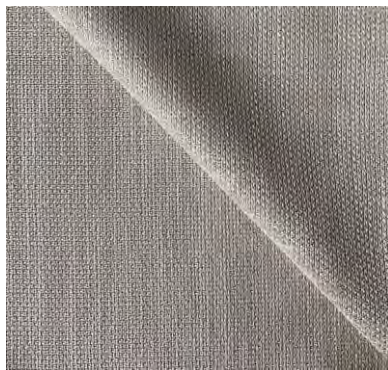
Lightfastness: 5



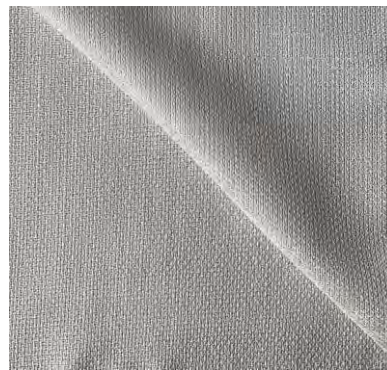
01 Pure White



02 Champagne



03 Linen



04 Light Silver



05 Light Stone



BIO RECYCLED
FR



BIO RECYCLED FR

Bio Recycled FR is an innovative fabric, made from recycled yarns, leaving a lower carbon footprint. It reduces energy, water and chemical consumption, keeping the environment clean and safe.

This upholstery fabric is inspired in the timeless beauty of the classic tweed, with a twist of masculine approach.

Rolefin is the first textile-recycled olefin yarn developed to produce furniture fabrics that has been converted from pre-consumer textile wastes. It consists of by-product materials from fiber, yarn and fabrics. Rolefin gives textile waste a new use, with zero water consumption, less energy use in production processes and has a **Recycled Claim Standard 2.0. Certification.**

Having the lowest carbon footprint, polypropylene fibre is the most environment-friendly conventional synthetic fibre. It's global warming potential is lower than other synthetic fibres.

ROLEFIN has all the following features :

- Zero Water Consumption During Production Processes
- Made of Textile Wastes- Recycled
- Recyclable (up to 7 times)
- Contains No Harmful Chemicals
- Energy Efficient
- Low CO² emissions
- Certified by Recycled Claim Standard 2.0



BIO RECYCLED FR

Width: 139 cm

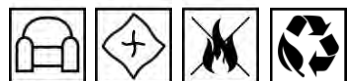
Weight: 502 g/lm

Composition: 100% ROLEFIN RECYCLED YARN

Martindale: 40.000 CC

Pilling: 4/5

FR: BS 5852 SOURCE 0 + EN 1021-1 + CALL 117 + NFPA 260



Bio Recycled FR 01
Sand



Bio Recycled FR 02
Linen



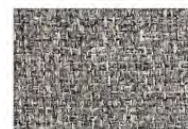
Bio Recycled FR 03
Caffé Latte



Bio Recycled FR 04
Mushroom



Bio Recycled FR 05
Autumn Leaves



Bio Recycled FR 06
Ash Gray



Bio Recycled FR 07
Gray Stone



Bio Recycled FR 08
Greige



Bio Recycled FR 09
Terracotta



Bio Recycled FR 10
Brandy



Bio Recycled FR 11
Saffron



Bio Recycled FR 12
Leafy Green



Bio Recycled FR 13
Denim Blue



RISE WLB

RISE WLB

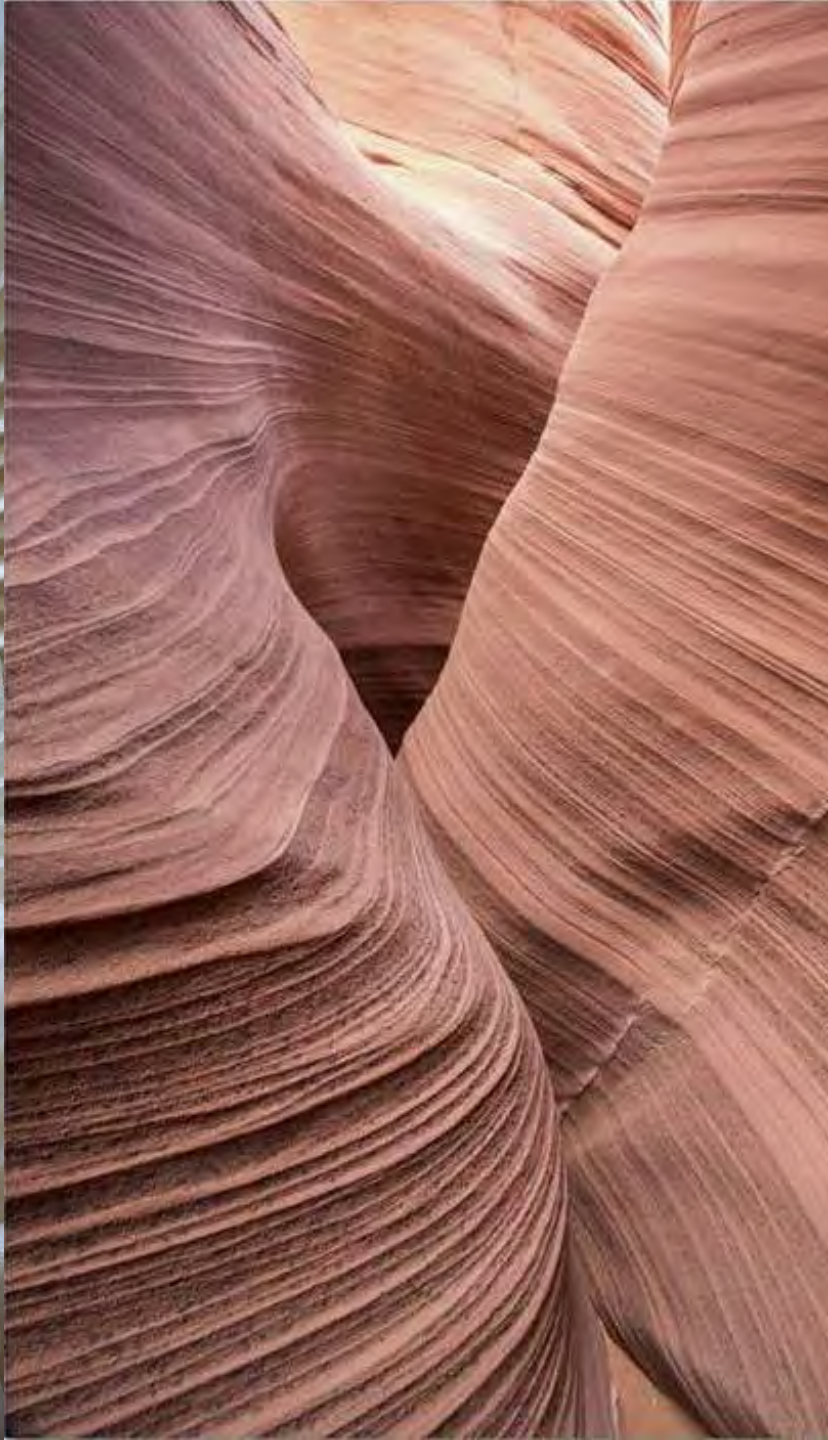


Rise WLB is a lovely curtain with 295 to 300 width, that resembles a net with the main veins vertically orientated. This sheer is surprisingly smooth and the strings gives the texture a natural and elegant brightness, thanks to the calendered finish. We present this sheer in 23 colors, all with Eco Lead Band for more ecological versatility.

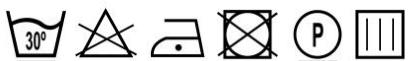
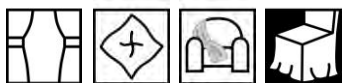


Composition: 100%PL
Width: 295/300 cm
Weight: 543 g/lm
Lightfastness: 4/5
Obs: With Eco Lead Band.

CORDVELVET



CORDVELVET



Cordvelvet is a curtain fabric that is also heavy weighted and has a great fall and feel, almost as a suede or peach skin touch. This curtain is 297 cm wide and has a lovely smooth touch, almost as a corduroy. It has a small strié effect and it's suited for drapery. Presented in 32 natural, trendy and bold colours.

Composition: 100%PL

Width: 295/297 cm

Weight: 600 g/lm

Lightfastness: 5

Pilling: 4/5

Martindale: 16.000 CC

Cordvelvet 01 Bright White	Cordvelvet 02 Pearl Gray	Cordvelvet 03 Silver Gray	Cordvelvet 04 Black	Cordvelvet 05 White Cream	Cordvelvet 06 Dove Gray	Cordvelvet 07 Angora Gray
Cordvelvet 08 Shadow Gray	Cordvelvet 09 Dark Mirage Gray	Cordvelvet 10 Oyster Gray	Cordvelvet 11 Casual Greige	Cordvelvet 12 Aquarelle	Cordvelvet 13 Milkshake	Cordvelvet 14 Parchment Beige
Cordvelvet 15 Natural Linen	Cordvelvet 16 Pink Nude	Cordvelvet 17 Grape Rose	Cordvelvet 18 Lavender Mist	Cordvelvet 19 Coral Reef	Cordvelvet 20 Hot Cherry	Cordvelvet 21 Burgundy
Cordvelvet 22 Burnt Orange	Cordvelvet 23 Apricot Rose	Cordvelvet 24 Banana Yellow	Cordvelvet 25 Marigold	Cordvelvet 26 Olive Green	Cordvelvet 27 Moss Green	Cordvelvet 28 Dragonfly Blue
Cordvelvet 29 Blue Heaven	Cordvelvet 30 Ice Blue	Cordvelvet 31 Blue Stone	Cordvelvet 32 Dark Ink Blue			







Bold Nature

Presented in one single colour that represents them all. All the colours in one fabric, to represent the life and beautiful corals of the corals.



SEALIFE



Sealife is one of the stars of this collection. We represent the life itself and the concern of the environmental issues of today and the future. The corals are very sensitive and they bless us with the most beautiful and amazing colors when the oceans are clean, but if the environment is polluted, the corals die and lose their beautiful colours. In this printed heavy bodied fabric, we offer a very natural background and it's 290 cm width makes it perfect for drapery and bedding.

Composition: 100%PL

Width: 290 cm

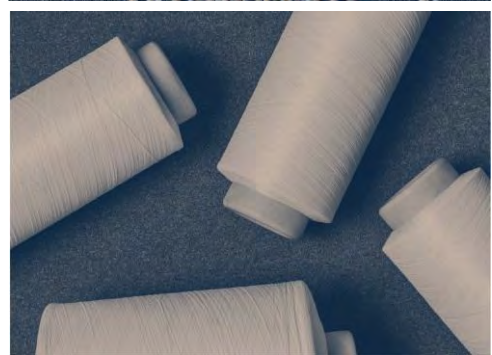
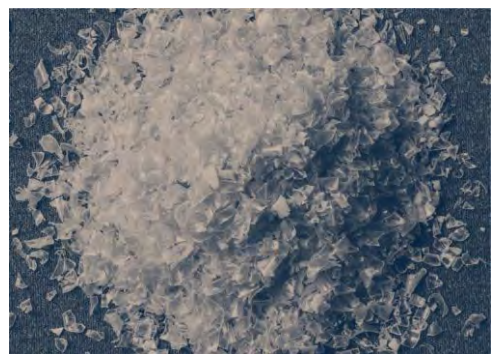
Weight: 1200 g/lm

Lightfastness: 5

FR Standards: DIN 4102-B1 + M1

Martindale: 80.000 CC (Only suitable for Bedding and Drapery)





RESCUE EASY CLEAN FR

Rescue is an innovative fabric, made from 100% recycled material of plastic bottles reclaimed from the sea.

This fabric is the perfect response to our commitment to heal the future and make this world a better place: It's made of 100% recycled material, doesn't generate any waste in it's production, is extremely long-lasting, anti-stain protection and it's also very comfortable.



- Soiling & Cleanibilty: 4/5
- Biocycle & PFC's Free
- Zero Waste Production

Composition: 100% RECYCLED PL

Width: 140 cm

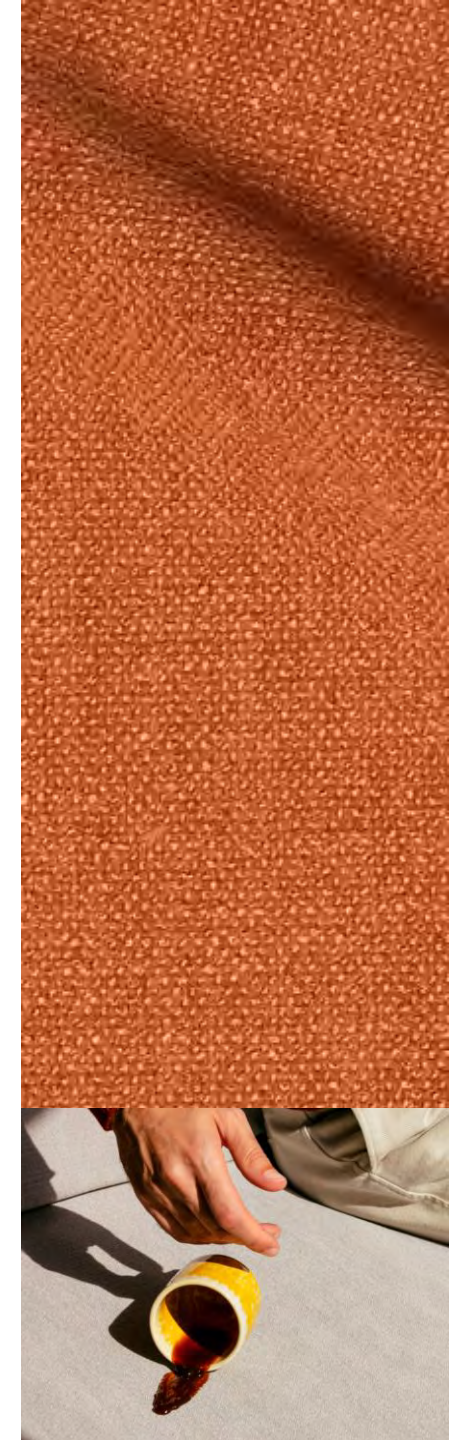
Weight: 760 g/lm

Martindale: >100.000 CC

Lightfastness: 5/6

Pilling: 4/5

FR: BS5852 Source 0 + EN1021-Part 1 + CAL TB 117 + NFPA 260. Other FR standards upon request.





GRAINY



Grainy is a fabric for curtain and it is special because of it's rustic texture and heaviness that gives it a great fall. Looking closely we, can see the magnificent blended effect with different colors. The natural look is present along the whole collection.

Composition: 57%PL + 43% LI

Width: 310 cm

Weight: 977 g/lm

Lightfastness: 5



01 Natural White



02 White Blue



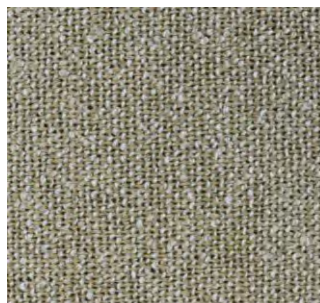
03 Linen



04 Dove



05 Greige



05 Blue Linen



ECOOL
EASY CLEAN



ECOOL EASY CLEAN

Ecool Easy Clean is inspired in the handcrafted burlap and the rough texture is dimmed out by the calandrad finish that softens the fabric. It has a dobby structure with a very smooth touch and with a semi-bouclé effect. We present this fabric with a variety of 36 colors, all of them with easy clean finish, for environmental awareness, in order to prevent the constant washing and to grant the aesthetic of this great fabric.

Composition: 65%PL + 35%CO

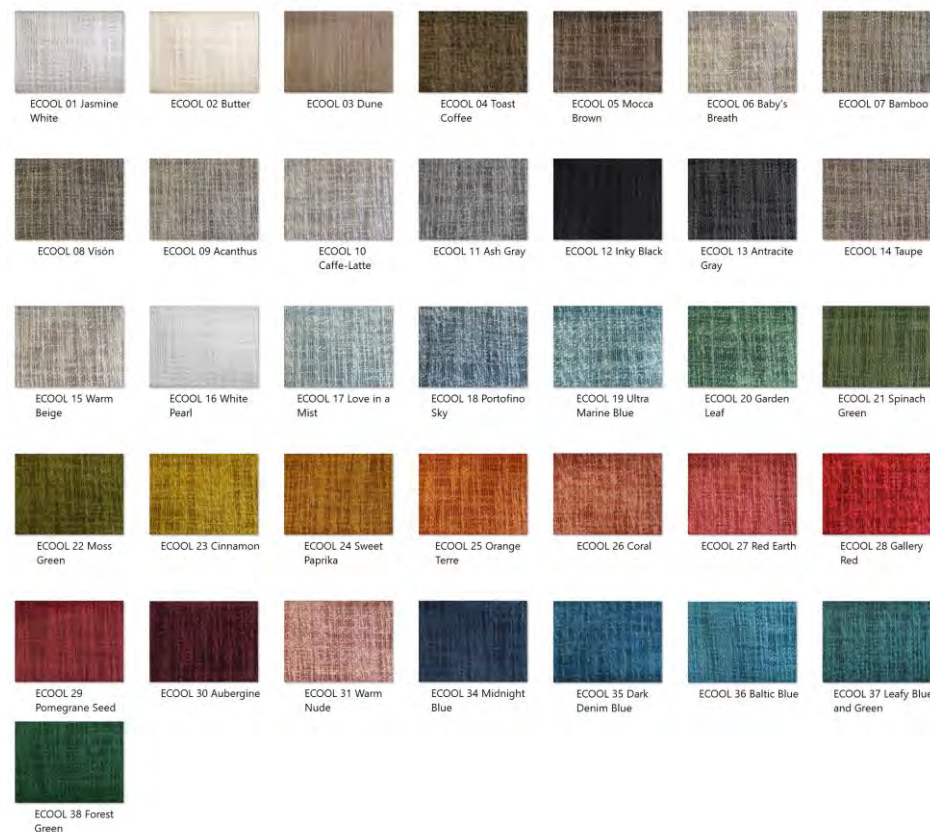
Width: 142/145 cm

Weight: 667 g/lm

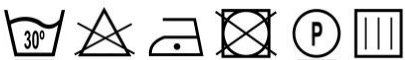
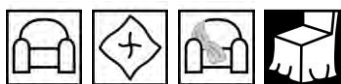
Lightfastness: 4/5

Pilling: 4

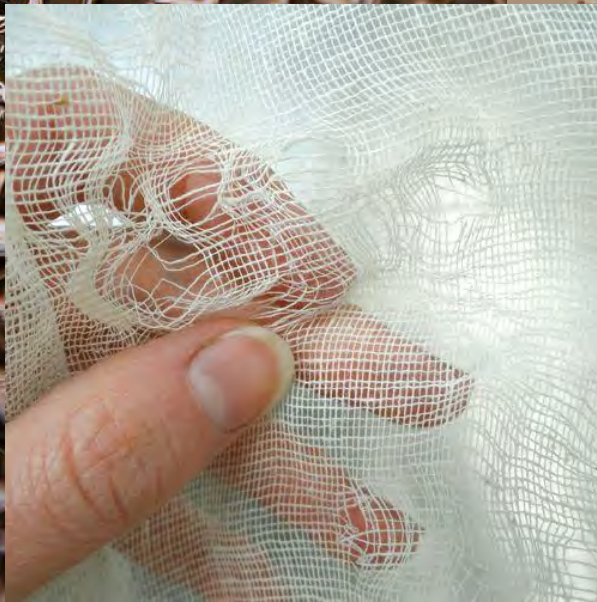
Martindale: 50.000 CC



DROPEASY
A FULL PERFORMANCE



HILL FR



HILL FR



Hill FR is a very natural smooth transparency for curtain with FR yarn, It has a natural linen look and lovely blended effect. Hill FR is a double width natural look transparency curtain resembling a handmade burlap. With a smooth transparency and with FR yarn and with a linen. We emphasize the natural look along the whole collection.

Composition: 100%PL FR

Width: 300 cm

Weight: 507 g/lm

Lightfastness: 5

FR Standards: M1 +

DIN 4102-B1 +

EN 13773 + IMO7



HILL FR 01 Off
White



HILL FR 02
Beige



HILL FR 03
White Aqua



HILL FR 04
Golden Earth



HILL FR 05
Moonstone



HILL FR 06
Misted Taupe



HILL FR 07
Petrol Blue



HILL FR 08
Navy Blue



HILL FR 09
Canyon Sunset



HILL FR 10
Linen Blush



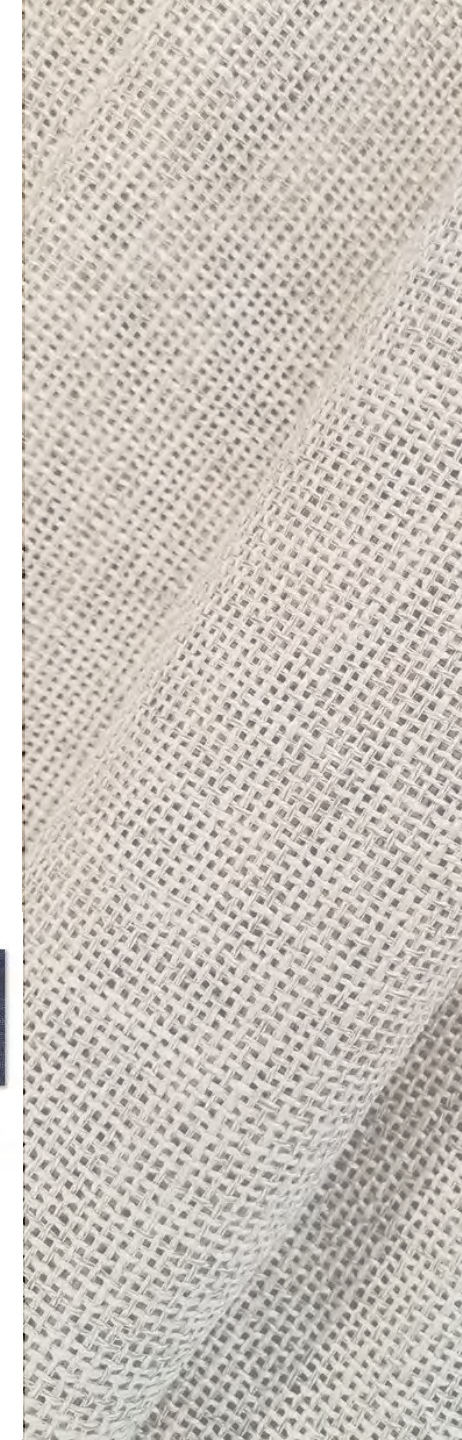
HILL FR 11
White Baltic



HILL FR 12
Steel Gray



HILL FR 13
Charcoal



CHILL FR



CHILL FR

Chill FR is our proposal for greatness and presence in drapery. This 300 cm wide fabric is very heavy, bodied, strongly structured and with a rich natural texture. Piece dyed in 31 magnificent colors with amazing blended effect, suited for drapery.

Composition: 100%PL

Width: 300 cm

Weight: 1200 g/lm

Lightfastness: 5

Pilling: 4

FR Standards: DIN 4102-B1 + M1

Martindale: 80.000 CC (Only suitable for Bedding and Drapery)



ESCAPE



ESCAPE

This gorgeous digital print fabric is inspired in the refuges of natural protected landscapes, as an abstract painting of the hills. In each colour, endless possibilities to mix and match with several variations.

This upholstery fabric is presented in a variety of 4 colours, from natural to trendy shades.

Composition: 100%PL

Width: 300 cm

Weight: 1200 g/lm

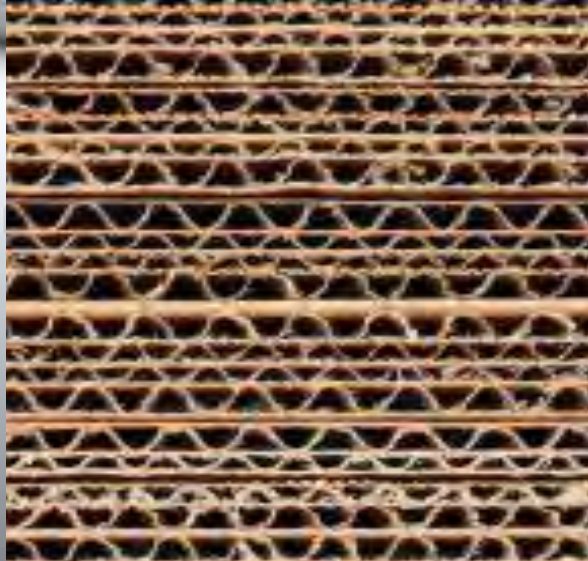
Lightfastness: 5

Pilling: 4

FR Standards: DIN 4102-B1 + M1

Martindale: 80.000 CC (Only suitable for Bedding and Drapery)





RECYCLING

RECYCLING

With Recycling we focus on creating a future beyond tomorrow. Recycling uses yarn produced from pre consumer and post consumer waste, this prevents wastage of potentially useful materials and resources along with many other benefits. These recycled materials follow a complete, verified chain of custody from input to final product. In order to provide a traceability throughout the entire production process to prove the level of recycled material, following the GRS (GLOBAL RECYCLED STANDARDS) criteria.

CHEMICALS: RECYCLING PREVENTS AIR POLLUTION

ENERGY USAGE: ENERGY USAGE WILL BE OPTIMISED AND CONTROLLED IN ORDER TO IMPROVE ANNUALLY

WATER POLLUTION: RECYCLING REDUCES WATER POLLUTION BY UTILISING WASTE THAT OTHERWISE ENDS UP IN LANDFILLS OR IN THE OCEAN

GAS EMISSIONS: THE PROCESS OF RECYCLING REDUCES ALSO EMISSIONS OF GREENHOUSE GASES

SOCIAL: STRONG SOCIAL RESPONSIBILITY POLICY SUCH AS NO CHILD LABOR AND NO UNNECESSARY HARM BY CHEMICALS FOR WORKERS

ENVIRONMENT: STRONG ENVIRONMENTAL PROTECTIONS IN PLACE SUCH AS WASTE DISCHARGE MANAGEMENT OF DANGEROUS SUBSTANCES AND NOISE EMISSIONS

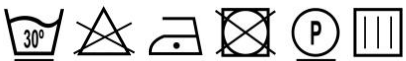
The GLOBAL RECYCLED STANDARD (GRS) is one of the most important organizations that internationally promote responsible and sustainable development in the textile sector. GRS aims to encourage the reduction of resource consumption (virgin raw materials, water and energy) and increased the quality of recycled products.



RECYCLING



Double width textured and heavy fabric made with recycled yarn suitable for light upholstery, bedding and drapery.



Composition: 55% RECYCLED PL + 45% PL

Width: 295/300 cm































Weight: 1092 g/lm

Lightfastness: 4/5

Pilling: 4/5

Martindale: 50.000 CC

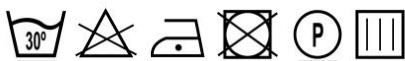
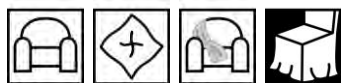


 Recycling_01 Bright White	 Recycling_02 Angora Gray	 Recycling_03 Stone Gray	 Recycling_04 Black	 Recycling_05 White Cream	 Recycling_06 Oyster Linen	 Recycling_07 Parchment Beige
 Recycling_08 Greige	 Recycling_09 Agate Gray	 Recycling_10 Natural Linen	 Recycling_11 Milkshake	 Recycling_12 Nomad Beige	 Recycling_13 Casual Greige	 Recycling_14 Sesame Beige
 Recycling_15 Mocha	 Recycling_16 Chocolate	 Recycling_17 Mellow Mauve	 Recycling_18 Cloudy Rose	 Recycling_19 Coral Reef	 Recycling_20 Brick Dust	 Recycling_21 Cadmium Rose
 Recycling_22 Amber Brown	 Recycling_23 Mustard	 Recycling_24 Raffia	 Recycling_25 Olive Gray	 Recycling_26 Aqua	 Recycling_27 Dragonfly Blue	 Recycling_28 Blue Heaven
 Recycling_29 Denim Blue	 Recycling_30 Blue Indigo					





ALLURE



Allure is a yarn dyed jacquard fabric with an extremely smooth touch. Inspired in the classic bouclé tweed, this magnificent upholstery fabric is available in 35 gorgeous colours with the bouclé effect of the textured chenille yarn. What makes this fabric so interesting, besides the amazing looks, is the fact that it is washable and the colors are very resistant.

Composition: 73%VI + 27%PL

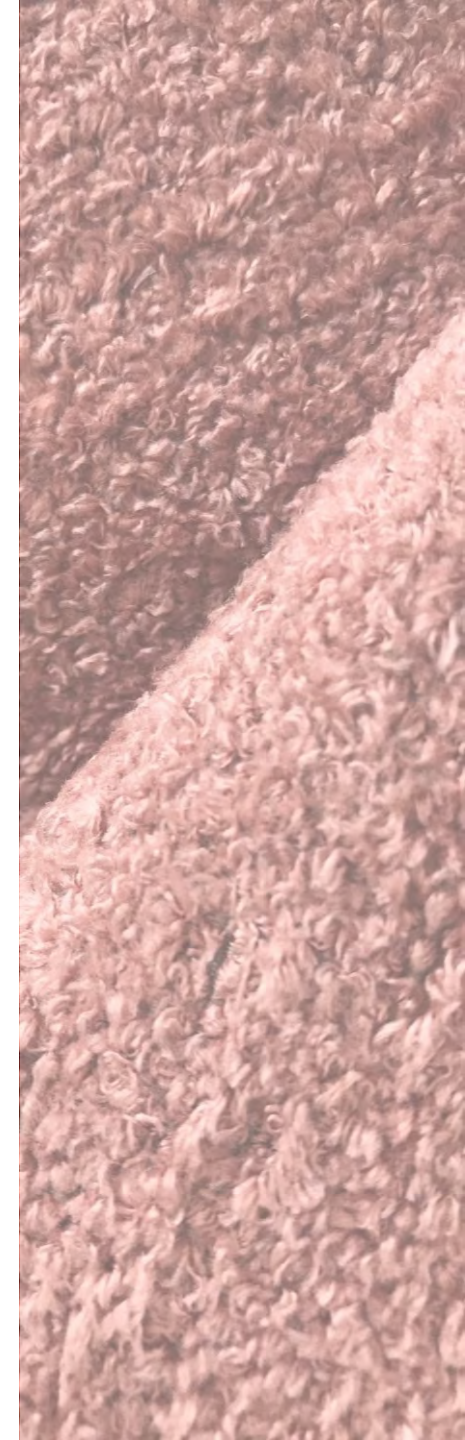
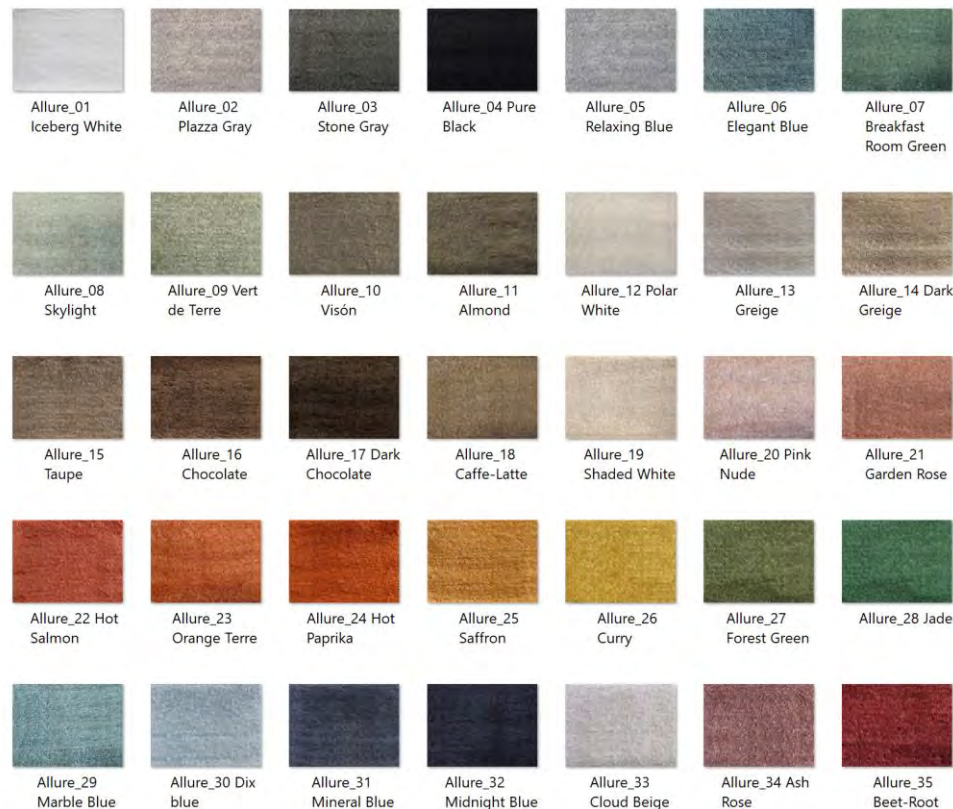
Width: 142/145 cm

Weight: 728 g/lm

Lightfastness: 4/5

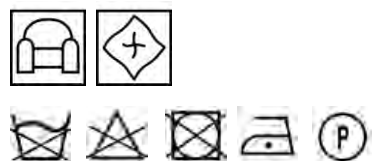
Pilling: 4/5

Martindale: 60.000 CC





WILD THING



Wild thing is a textured bouclé with a wild look and a jacquard chevron effect. This fabric is also an upgrade of INVICTA 2020 collection, adding a new range of natural and trendy colours to this magnificent upholstery fabric. The colours are rich and the background is contrasting with the pile, to emphasise the chevron effect.

Composition:
65%CO + 16%PL + 13%VI + 6%LI
Width: 140 cm
Weight: 880 g/lm
Martindale: > 40.000 CC
Pilling: 3/4
Lightfastness: 4/5
FR: BS 5852 Source 1
FR Treatment available upon request.



WILD THING 01 Wild
White



Wild Thing 02 White
Cotton



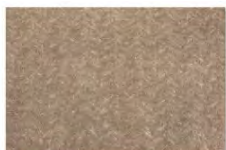
Wild Thing 03 White
Sand



Wild Thing 04 White
on Black



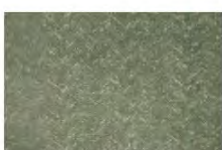
Wild Thing 05
Creamy Shadow



Wild Thing 06 Linen



Wild Thing 07
Terracotta



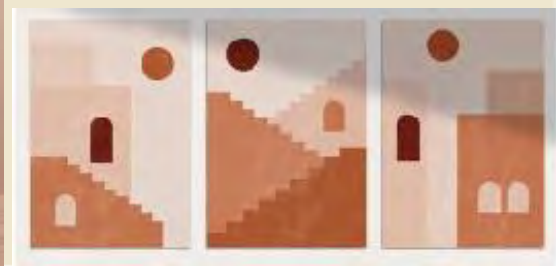
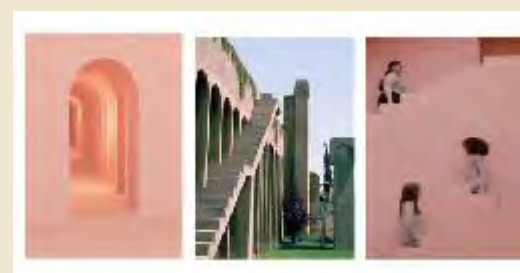
Wild Thing 08 Oil
Green



Wild Thing 09 Indigo



InHAUS



InHaus

InHAUS is a fabric with a strong inspiration on the Bauhaus legacy, as a transition from the previous collection Invicta 2020.

Following our environmental awareness, this high pile cotton velvet has been developed with an inherent treatment with Polygiene ViralOff, that is imbibed within the fibre production and kills 99% of viruses within 2 hours.

Urban geometric architecture deconstructed and assembled as this artistic movement's aesthetics, takes us back to a warm place where the harmony of geometric and organic shapes come together as a southern picture of an Urban Geometry Architecture.

This soft jacquard weave plain velvet is available in 3 colours and can be FR treated.

It is possible to order with COEX FR certificate, however it cannot be simultaneously with antiviral treatment.

Width: 140 cm

Weight: 630 g/lm

Pile: 100% CO / Ground: 93% CO 7%MO

Martindale: 50.000 CC

Treated with "Polygiene ViralOff", that reduces 99% of viruses in 2 hours..

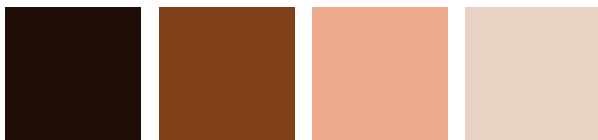
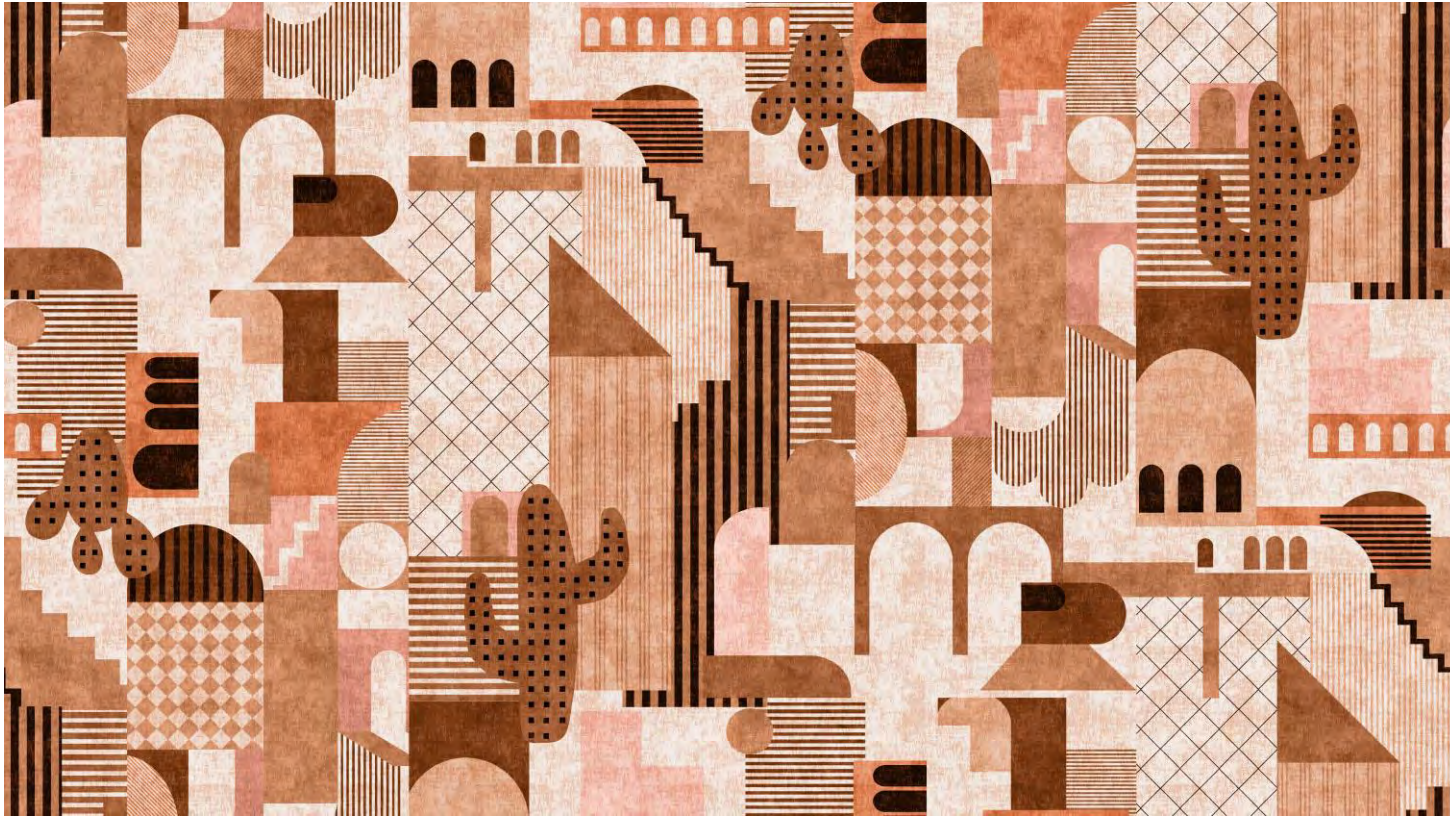




01 Toast and Coffee

Warm neutral tones like creamy toast, combined with the popularity and calming Effect of coffee and chocolate shades.





02 Spiced Up

Spicy terracottas palette to combine with warm colors such as orange, brown or combine with neutral colours to simply spice up the mood.





03 Leafy Blue and Green

A renewed appreciation for nature in the shades of deep olive shades and darker blues.



